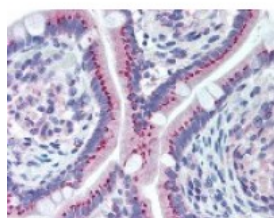




## GOLPH2 Antibody

CATALOG NUMBER: 49-279



Immunohistochemistry staining of  
GOLPH2 in small intestine tissue using  
GOLPH2 Antibody.

### Specifications

<b>SPECIES REACTIVITY:</b>	Human
<b>TESTED APPLICATIONS:</b>	ELISA, IHC
<b>APPLICATIONS:</b>	GOLPH2 antibody can be used in ELISA starting at 1:3000 - 1:12000, Western Blot starting at 1:500 - 1:2000, and immunohistochemistry starting at 5 mg/ml.
<b>USER NOTE:</b>	Optimal dilutions for each application to be determined by the researcher.
<b>IMMUNOGEN:</b>	GOLPH2 antibody was raised against amino acids 67 - 81 of GOLPH2 (Human).
<b>HOST SPECIES:</b>	Rabbit

### Properties

<b>PURIFICATION:</b>	Protein G Column
<b>PHYSICAL STATE:</b>	Liquid
<b>BUFFER:</b>	PBS, pH 7.3, 0.5% BSA, 0.05% sodium azide.
<b>STORAGE CONDITIONS:</b>	GOLPH2 antibody can be stored short term 4 °C. For long term storage aliquot and store at -20 °C. As with all antibodies avoid freeze/thaw cycles.
<b>CLONALITY:</b>	Polyclonal
<b>ISOTYPE:</b>	IgG
<b>CONJUGATE:</b>	Unconjugated

### Additional Info

<b>ALTERNATE NAMES:</b>	GOLM1, BA379P1.3, Golgi membrane protein GP73, Golgi phosphoprotein 2, Golgi protein, 73-kD, gp73, GOLPH2, PSEC0257, C9orf155, Golgi membrane protein 1
<b>ACCESSION NO.:</b>	Q8NBJ4
<b>PROTEIN GI NO.:</b>	51316027
<b>OFFICIAL SYMBOL:</b>	GOLM1
<b>GENE ID:</b>	51280

## Background

**BACKGROUND:** The Golgi complex plays a key role in the sorting and modification of proteins exported from the endoplasmic reticulum. The protein encoded by this gene is a type II Golgi transmembrane protein. It processes protein synthesized in the rough endoplasmic reticulum and assists in the transport of protein cargo through the Golgi apparatus. The expression of this encoded protein has been observed to be upregulated in response to viral infection.

---

**FOR RESEARCH USE ONLY**

December 13, 2016