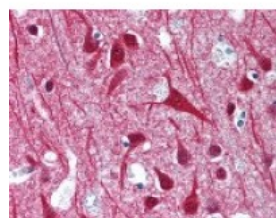




EIF2AK4 Antibody

CATALOG NUMBER: 49-235



Immunohistochemistry staining of
EIF2AK4 in brain cortex tissue using
EIF2AK4 Antibody.

Specifications

SPECIES REACTIVITY:	Human
TESTED APPLICATIONS:	IHC, WB
APPLICATIONS:	ELISA, Immunofluorescence, Western Blot. EIF2AK4 antibody can be used in ELISA starting at 1: 10000, Western Blot starting at 1: 500 - 1: 2000, and immunohistochemistry starting at 1:200.
USER NOTE:	Optimal dilutions for each application to be determined by the researcher.
IMMUNOGEN:	EIF2AK4 antibody was raised against recombinant partial protein corresponding to a.a.120 - 330 of EIF2AK4 (Human).
HOST SPECIES:	Rabbit

Properties

PURIFICATION:	Immunoaffinity Chromatography
PHYSICAL STATE:	Liquid
BUFFER:	Phosphate-buffered solution, pH 7.2, 0.09% sodium azide, 50% glycerol.
STORAGE CONDITIONS:	Aliquot and store EIF2AK4 antibody at -20 °C. As with all antibodies avoid freeze/thaw cycles.
CLONALITY:	Polyclonal
ISOTYPE:	IgG
CONJUGATE:	Unconjugated

Additional Info

ALTERNATE NAMES:	EIF2AK4, GCN2, GCN2 eIF2alpha kinase, GCN2-like protein, Mgc2, KIAA1338
ACCESSION NO.:	Q9P2K8
PROTEIN GI NO.:	296439368
OFFICIAL SYMBOL:	EIF2AK4
GENE ID:	440275

Background

BACKGROUND:

Eukaryotic initiation factor-2 alpha (eIF-2 alpha) kinase 4, a Translational Control type protein kinase, is the mammalian homolog of yeast GCN2. Like its yeast counterpart, human GCN2 is believed to inhibit translation by phosphorylating the initiation factor eIF2alpha chain in response to amino acid starvation.

FOR RESEARCH USE ONLY

December 13, 2016