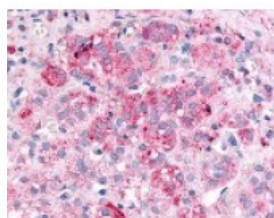




## SPHK1 Antibody

CATALOG NUMBER: 48-206



Immunohistochemistry staining of SPHK1  
in adrenal, zona glomerulosa tissue using  
SPHK1 Antibody.

### Specifications

<b>SPECIES REACTIVITY:</b>	Gorilla, Human
<b>TESTED APPLICATIONS:</b>	IHC
<b>APPLICATIONS:</b>	SPHK1 antibody can be used in ELISA, Western Blot starting at 1:500 - 1:1000, immunohistochemistry starting at 5 ug/mL, and immunofluorescence starting at 10 ug/mL.
<b>USER NOTE:</b>	Optimal dilutions for each application to be determined by the researcher.
<b>SPECIFICITY:</b>	BLAST analysis of the peptide immunogen showed no homology with other human proteins.
<b>IMMUNOGEN:</b>	SPHK1 antibody was raised against a peptide located in the N-Terminal domain of SPHK1 (Human).
<b>HOST SPECIES:</b>	Rabbit

### Properties

<b>PURIFICATION:</b>	Immunoaffinity Chromatography
<b>PHYSICAL STATE:</b>	Liquid
<b>BUFFER:</b>	PBS, 0.1% sodium azide.
<b>STORAGE CONDITIONS:</b>	SPHK1 antibody should be stored long term (months) at -80 °C and short term (days) at 4 °C. As with all antibodies avoid freeze/thaw cycles.
<b>CLONALITY:</b>	Polyclonal
<b>CONJUGATE:</b>	Unconjugated

### Additional Info

<b>ALTERNATE NAMES:</b>	SPHK1, SK1, Sphingosine kinase 1, SPHK, SK 1, SPK 1, Sphingosine kinase type 1, SPK
<b>ACCESSION NO.:</b>	Q9NYA1
<b>PROTEIN GI NO.:</b>	17369329
<b>OFFICIAL SYMBOL:</b>	SPHK1
<b>GENE ID:</b>	8877

### Background

**BACKGROUND:**

Sphingosine kinase (SPHK) phosphorylates sphingosine to form a bioactive lipid mediate, sphingosine 1-phosphate (S1P or SPP). S1P is a novel lipid messenger with both intracellular and extracellular functions. Intracellularly, it regulates proliferation and survival while extracellularly it is a ligand for EDG 1. Expression of SPHK1 and subsequent production of S1P promotes the G1-S transition, protects cells from apoptosis, stimulates migration and angiogenesis, and induces tumor formation in mice.

---

**FOR RESEARCH USE ONLY**

December 13, 2016