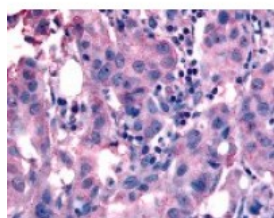




## NANP Antibody

CATALOG NUMBER: 48-196



Immunohistochemistry staining of NANP  
in neoplastic cells using NANP Antibody.

### Specifications

<b>SPECIES REACTIVITY:</b>	Dog, Gibbon, Gorilla, Hamster, Human, Mouse, Rat
<b>TESTED APPLICATIONS:</b>	IHC
<b>APPLICATIONS:</b>	NANP antibody can be used in Western Blot at 0.25 ug/mL, immunohistochemistry starting at 10 ug/mL, and immunoprecipitation starting at 10 ug/mL.
<b>USER NOTE:</b>	Optimal dilutions for each application to be determined by the researcher.
<b>SPECIFICITY:</b>	BLAST analysis of the peptide immunogen showed no homology with other human proteins.
<b>IMMUNOGEN:</b>	NANP antibody was raised against a peptide located near the internal domain of NANP (Human).
<b>HOST SPECIES:</b>	Rabbit

### Properties

<b>PURIFICATION:</b>	Immunoaffinity Chromatography
<b>PHYSICAL STATE:</b>	Liquid
<b>BUFFER:</b>	PBS, 0.1% sodium azide.
<b>STORAGE CONDITIONS:</b>	NANP antibody should be stored long term (months) at -80 °C and short term (days) at 4 °C. As with all antibodies avoid freeze/thaw cycles.
<b>CLONALITY:</b>	Polyclonal
<b>CONJUGATE:</b>	Unconjugated

### Additional Info

<b>ALTERNATE NAMES:</b>	NANP, C20orf147, DJ694B14.3, Neu5Ac-9-Pase, HDHD4
<b>ACCESSION NO.:</b>	Q8TBE9
<b>PROTEIN GI NO.:</b>	30315932
<b>OFFICIAL SYMBOL:</b>	NANP
<b>GENE ID:</b>	140838

### Background

