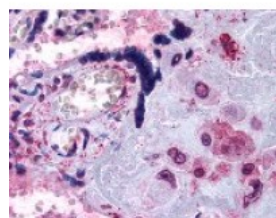




## GPR115 Antibody

CATALOG NUMBER: 48-165



Immunohistochemistry staining of  
GPR115 in placenta tissue using GPR115  
Antibody.

### Specifications

<b>SPECIES REACTIVITY:</b>	Gibbon, Gorilla, Human
<b>TESTED APPLICATIONS:</b>	ELISA, IHC
<b>APPLICATIONS:</b>	GPR115 antibody can be used in immunohistochemistry starting at 5 ug/mL.
<b>USER NOTE:</b>	Optimal dilutions for each application to be determined by the researcher.
<b>SPECIFICITY:</b>	BLAST analysis of the peptide immunogen showed no homology with other human proteins.
<b>IMMUNOGEN:</b>	GPR115 antibody was raised against a peptide located in the C-Terminal cytoplasmic domain of GPR115 (Human).
<b>HOST SPECIES:</b>	Rabbit

### Properties

<b>PURIFICATION:</b>	Immunoaffinity Chromatography
<b>PHYSICAL STATE:</b>	Liquid
<b>BUFFER:</b>	PBS, 0.1% sodium azide.
<b>STORAGE CONDITIONS:</b>	GPR115 antibody should be stored long term (months) at -80 °C and short term (days) at 4 °C. As with all antibodies avoid freeze/thaw cycles.
<b>CLONALITY:</b>	Polyclonal
<b>CONJUGATE:</b>	Unconjugated

### Additional Info

<b>ALTERNATE NAMES:</b>	GPR115, PGR18, G protein-coupled receptor 115, G-protein coupled receptor 115
<b>ACCESSION NO.:</b>	Q8IZF3
<b>PROTEIN GI NO.:</b>	296439339
<b>OFFICIAL SYMBOL:</b>	GPR115
<b>GENE ID:</b>	221393

### Background

**BACKGROUND:** G-protein coupled receptor GPR115 is an Orphan-B GPCR with an unknown ligand.

---

**FOR RESEARCH USE ONLY**

December 13, 2016