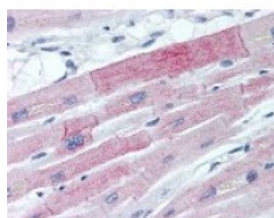




EIF4E Antibody

CATALOG NUMBER: 49-237



Immunohistochemistry staining of EIF4E in heart tissue using EIF4E Antibody.

Specifications

SPECIES REACTIVITY:	Human
TESTED APPLICATIONS:	IHC, WB
APPLICATIONS:	ELISA, Immunofluorescence, Western Blot. EIF4E antibody can be used in ELISA starting at 1: 10000, Western Blot starting at 1: 500 - 1: 2000, and immunohistochemistry starting at 1:200.
USER NOTE:	Optimal dilutions for each application to be determined by the researcher.
IMMUNOGEN:	EIF4E antibody was raised against recombinant (partial), N-Terminal region of EIF4E (Human).
HOST SPECIES:	Rabbit

Properties

PURIFICATION:	Immunoaffinity Chromatography
PHYSICAL STATE:	Liquid
BUFFER:	Phosphate-buffered solution, pH 7.2, 0.09% sodium azide, 50% glycerol.
STORAGE CONDITIONS:	Store EIF4E antibody at 4 °C or -20 °C. As with all antibodies avoid freeze/thaw cycles.
CLONALITY:	Polyclonal
ISOTYPE:	IgG
CONJUGATE:	Unconjugated

Additional Info

ALTERNATE NAMES:	EIF4E, EIF-4E, EIF4E1, EIF4EL1, EIF4F, CBP, EIF-4F 25 kDa subunit, mRNA cap-binding protein
ACCESSION NO.:	P06730
PROTEIN GI NO.:	1352435
OFFICIAL SYMBOL:	EIF4E
GENE ID:	1977

Background

FOR RESEARCH USE ONLY

